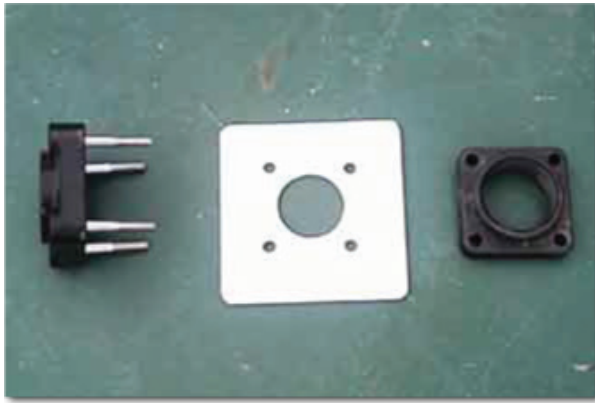
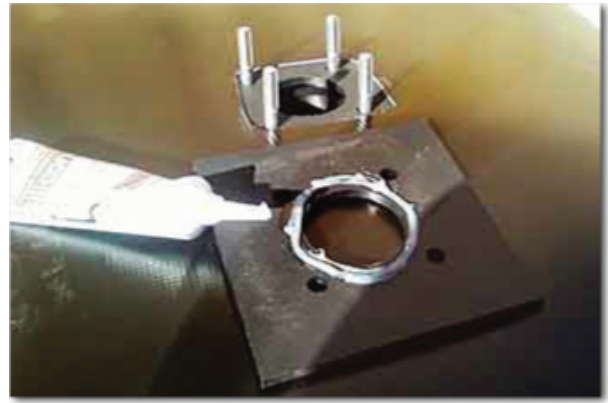


Water Tank flange Assembly Repair



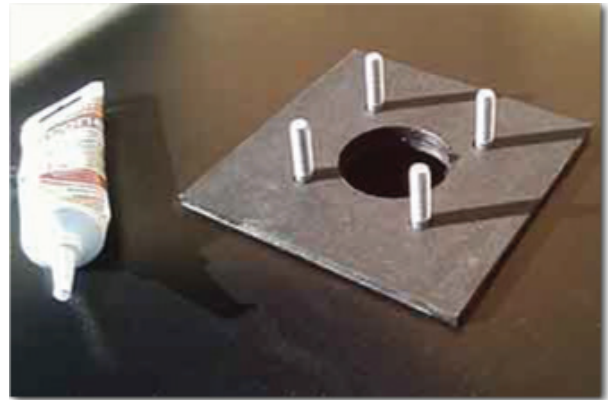
1. Flange Repair Kit



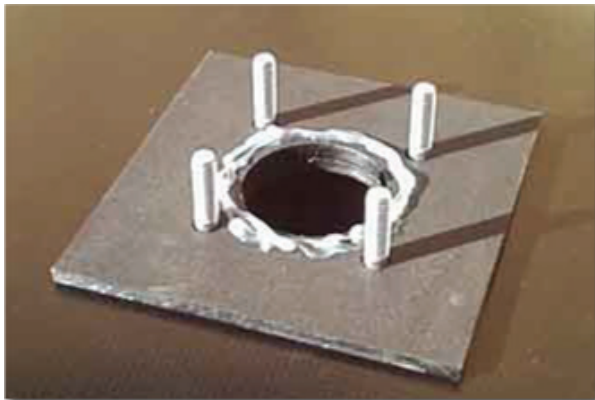
2. Apply Silicone to Bottom Tank Flange



3. Install Tank Flange On Top of Bolts



4. Install Tank Flange On Top of Bolts



5. Apply Silicone to Tank Flange Top



6. Install Tank Flange Fitting



7. Tighten Nuts to Tank Flange Evenly



8. Retorque In 10min. Latter

9. Retorque the Following Day (DO NOT OVER TORQUE)

If Tank Flange Leaks Reapply Silicone Evenly or Retorque Flange nuts